

S MONE`

*The Way to*  
*Perfect Skin*

To achieve flawless skin



# ALL DAY PERFECT SKIN FOUNDATION

S MONE



With a light, semi-matte formula that blends in effortlessly, gives skin a healthy glow, lasts all day, and shields skin from UVA and UVB radiation with SPF 30 PA++++ to prevent dullness and sunspots. With the aid of Mattifying Crosspolymer technology, brightens the face and reduces oiliness as well, leaving your skin smooth and beautiful all day.

Technology  
mattifying  
crosspolymer

The skin is immediately smoothed by **wrinkle filling technology**.  
Sweat and sebum are absorbed, wrinkles get shallower, and pores seem blurred.

Silica  
High Oil  
Absorption

Due to its **tiny molecules**, it can absorb up to four times more oil. It aids in adjusting the consistency of the foundation cream so that it does not get greasy, effectively absorbs sweat and sebum, but does not cause the skin to become dry and stiff.

Ultramarine  
Blue

Biosaccharide  
GUM-4



With the aid of natural extracts, it **functions as a shield to defend the skin** from UV rays and PM 2.5 pollution. It acts as an outer layer of protection to stop pollution from immediately touching and adhering to the skin.

The **Korean method of blending** makes use of the way blood vessels are organized beneath the skin to help the foundation cream match the skin tone.

With the benefits of **six different red flowers**—the Carnation, Moutan Peony, Peony, Japanese Camellia, Rose, and Nelumbo Nucifera—to nourish beautiful skin, help prevent wrinkles, and possess antiacne properties.



NO.  
01



suitable for  
fair skin tone

NO.  
02



suitable for  
yellow skin tone

NO.  
03



suitable for  
olive skin tone

# ALL DAY PERFECT SKIN POWDER FOUNDATION

S MONE'



With the use of Diamond Powder and Soft Focus technology, eliminate pores and wrinkles. Resistant to perspiration and water. Incorporated with absorbents to remove excess oil from the face and SPF 30 PA++++ to shield skin from UVA and UVB rays for a more radiant complexion.



Its effects on the top layer of skin are comparable to those of natural oils. Aids in moisture restoration and stops skin layer moisture from evaporation. It helps soothe skin without leaving a greasy or pore-clogging feeling.

Gran Powder  
Lumière



or **Soft Focus technology** with a diffusion mechanism that gives the skin a radiant, aura-like appearance will help to blur the skin's surface and wrinkles, giving the skin a more youthful appearance.

Ceramide



Ceramides strengthen the skin's protective layer, which is essential for shielding the skin from pollution, UV rays, and moisture loss. They may also help smooth out wrinkles.

Anti - oxidant

With antioxidant extracts from Fullerene, Coenzyme Q10, and Astaxanthin that protect skin from aging and deterioration.



- Helps slow down skin aging, reduce wrinkles, stretch mark
- Increases moisture and reduces roughness of the skin.

- Inhibits melanin synthesis, lightens dark spots and melasma.
- Protects skin from free radical damage
- Stimulates collagen production, makes skin elastic and firm.

Natura-Tec  
Marine Cell  
Shield AP



Technology that protects facial cells from pollution

NO.  
01

suitable for  
fair skin tone

NO.  
02

suitable for  
yellow skin tone

NO.  
03

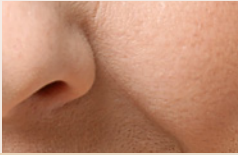
suitable for  
olive skin tone.

# “Create beautiful skin by giving your face to achieve perfection”



Step 1

**ALL DAY PERFECT SKIN  
FOUNDATION**



Step 2

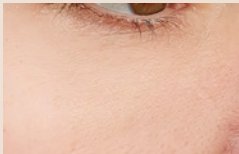
**ALL DAY PERFECT SKIN  
POWDER FOUNDATION**



Smooth coverage without stains



Control oiliness, create a lovely blur, and nurture your skin all at once.



It complements skin tones and is appropriate for all skin types.

\* Results vary based on each person's skin condition.



## S MONE` Blender

The **S Mone' Blender** texture is firm and fine thanks to Micron Fiber Technology Support, enabling the foundation to blend easily to the skin, without stains, with increased coverage, and without wasting a lot more foundation

Used to apply foundation all over the face.

- forehead
- cheek



Used to apply foundation and powder to the face's tiniest crevices.

- Side of nose
- Under the eyes
- Under the lips
- Under the eyebrows

**S MONE` Blender**  
Makeup sponge